

Canon

imageRUNNER®
5020 / 6020 SERIES



DEPARTMENTAL
SYSTEMS



meap
POWERED BY

imageRUNNER®
5020/6020 SERIES

DEPARTMENTAL SYSTEMS

IS YOUR DEPARTMENT TOO BUSY
DOING TOO MANY JOBS TO GET
ANY WORK DONE?

Get a networked productivity
solution to streamline the
workflow and the workload
will take care of itself.

If your corporate workgroup or department is like most, chances are your information workload is on permanent overload. This is the time for Canon's newest productivity solution—the new Canon imageRUNNER® 5020/6020 Series.

Incorporating Canon's newly developed MEAPT™ (Multifunctional Embedded Application Platform) architecture, the imageRUNNER 5020/6020 Series will give your business greater control over costs and productivity by embedding diverse and customizable applications for a wide range of business workflow requirements.

Designed to fit seamlessly into your existing environment, the imageRUNNER 5020/6020 Series lets you manage and share information faster than ever before—acting as a dynamic central hub for total office automation and management of paper and electronic-based information.



EVOLUTION OF THE imageRUNNER Series

As the newest generation imageRUNNER, this Series represents much more than potential realized—it’s a symbol of innovative technology, quality, and reliability.



User-friendly Control Panel

Canon’s MEAP-enabled imageRUNNER 5020/6020 Series is a highly advanced digital imaging solution that tightly integrates with every aspect of your workflow. The result is superior control of your business’ critical information—the currency of the new economy.

The imageRUNNER 5020/6020 Series is a powerful quartet of products designed to support the demanding needs of departments and busy corporate workgroups. The imageRUNNER 5020 and imageRUNNER 5020i each deliver output at a fast 50 pages per minute, while the imageRUNNER 6020 and imageRUNNER 6020i take your output productivity up a notch to speeds of 60 pages per minute. No matter which model you choose, you’ll benefit

from Canon’s industry-renowned image quality for the most faithful reproduction of text and images.

In one space-saving device, the imageRUNNER 5020/6020 Series can support advanced digital Copying and Mail Box features, network printing and scanning functions, plus the ability to easily send electronic information across a diverse and ever-changing digital landscape.

Best of all, users and administrators are provided all the necessary tools for quick and intuitive operation of all features, whether it be at the device, through a large, full-color, touch-screen user-interface panel, or at a desktop, through Canon-supplied device drivers and utilities.

Function	imageRUNNER 5020/6020	imageRUNNER 5020i/6020i
Copy	Standard	Standard
Mail Box	Standard	Standard
Print	Optional	Standard
Scan	Standard	Standard
Send	Optional (eCopy Suite)	Standard (Universal Send*)

* Includes a 20-user version of eCopy Desktop software.

RAPID DEPLOYMENT. DESTINATION ANYWHERE.

Using the power of corporate networks and the Internet, the imageRUNNER 5020/6020 Series allows users to deploy all forms of information with unprecedented speed and unparalleled convenience.

Universal Send™—An All-terrain Vehicle for the New Information Super Highway.

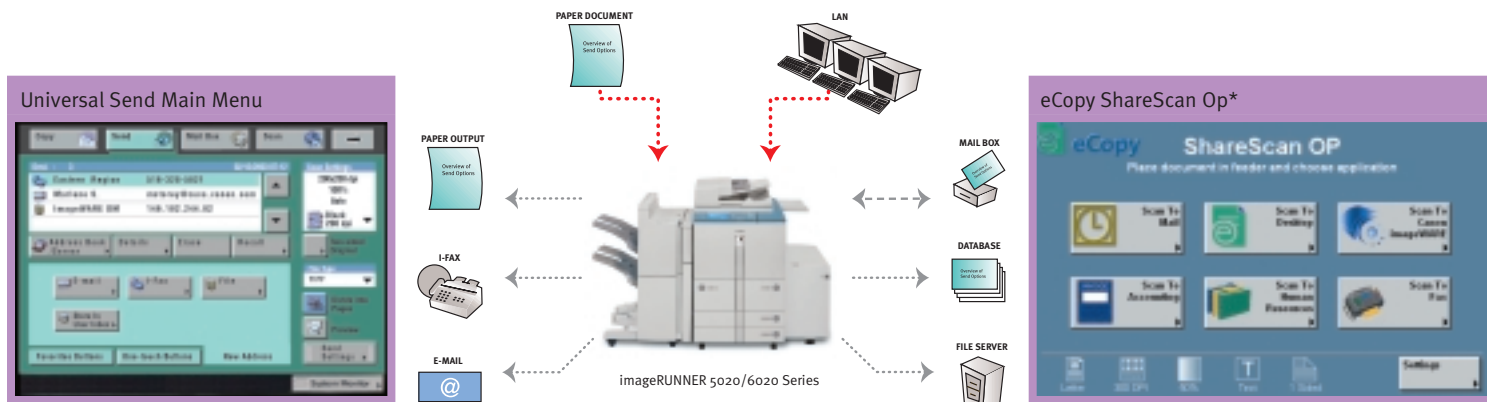
Targeted to workgroups and smaller departments, Universal Send technology (standard with the imageRUNNER 5020i/6020i) enables users to scan documents directly at the device for distribution to multiple destinations, including individual or group E-mail and Internet fax (I-fax) addresses, network or host folders, and document management applications such as Canon's imageWARE™ Document Manager, all in one time-saving operation. This eliminates the expense and administrative burden associated with printing, forwarding, and filing hard-copy documents.

When sending documents, users can easily enter destination addresses at the touch-screen or access the system's high-capacity Address Book. With LDAP (Lightweight Directory Access Protocol) support, you can search for E-mail addresses on an LDAP server, dynamically accessing corporate directories.

MEAP and eCopy Make Electronic Document Distribution Easier Than Ever

Ideally suited for larger departments and enterprises, the eCopy Suite of products and the high-speed scanning capability of the imageRUNNER 5020/6020 devices can transform paper documents into information that is easily integrated into all business applications. eCopy connects with your company's E-mail and other networked enterprise applications for secure, low-cost, instantaneous distribution and management of information.

Thanks to Canon's MEAP development architecture, operability is made easier than ever, as users can now invoke eCopy's powerful capabilities right from the imageRUNNER 5020/6020's touch-screen user-interface panel. The result is an easy-to-use system that requires minimal end-user training.



WHAT EVER HAPPENED TO THE PAPERLESS OFFICE?

Digitize Your Documents and Permanently Alter Your To-Do List.



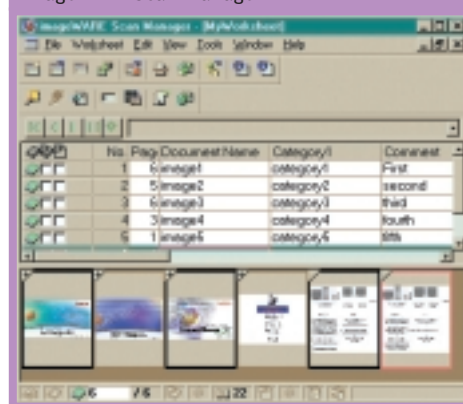
imageWARE Integration

Integrate the powerful scanning capabilities of the imageRUNNER 5020/6020 Series with Canon's imageWARE Office Software Suite for a complete information-capturing, management, and distribution system.

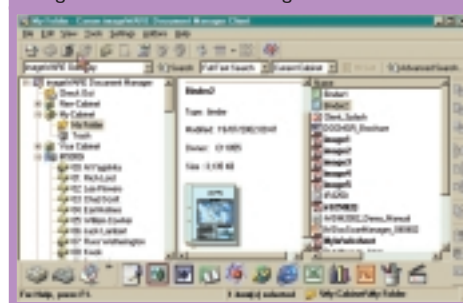
With the automatic scanning and indexing capabilities of imageWARE Scan Manager, your business can capture high volumes of documents quickly. Imagine reducing manual labor costs related to scanning by more than 20% and document indexing time by more than 50%! Advanced image capture and data recognition improves the accuracy and usefulness of digitized, computer-based information.

Canon's imageWARE Document Manager is the central database repository of the imageWARE Suite. It has a client-server architecture that can be easily scaled to meet growing business needs, and is designed to reduce or replace traditional hard-copy document storage methods in the general office environment. It also supports high-volume document-handling applications for retrieval, archival, and records management.

imageWARE Scan Manager



imageWARE Document Manager



Key Vertical Market Applications

Healthcare

- Scan and store patient records, insurance forms, and prescription information into a secured database.

Marketing

- Scan and send competitive product information to a shared network folder.

Engineering/Construction

- Scan and distribute schematics and drawings to your clients instantaneously.



SATISFY THAT BURNING DESIRE YOU'VE ALWAYS HAD TO... MULTITASK!

In addition to its many unique features, the imageRUNNER 5020/6020 Series provides considerable flexibility, from simple to advanced in-house production-level copying.

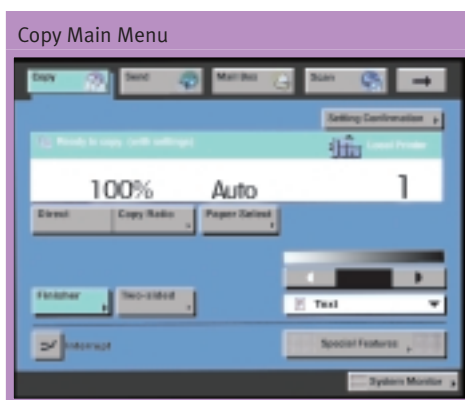
Scan-Once-Print-Many: Leverages inherent digital features by making copies from images stored in memory, resulting in reduced scanner wear and tear.

Full Concurrency: Elevates overall multifunction capabilities by synchronizing scanner, image processor, and engine operation. Users can store up to five copy jobs in memory, while other copy or print jobs are being processed.

Job Build: Easily combine documents scanned through the document feeder with those directly placed on the platen glass. Also allows users to process jobs that exceed the capacity of the document feeder.

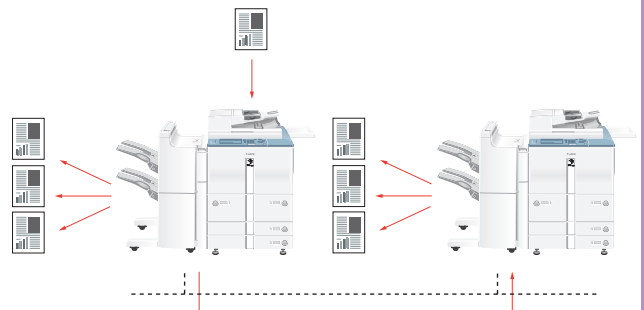
Chapterization: Supports the creation of chapters when copying materials that require separations.

Cascade and Remote Copy: Enhances productivity via the connection of multiple imageRUNNER 5020/6020 Series devices located elsewhere on the network.

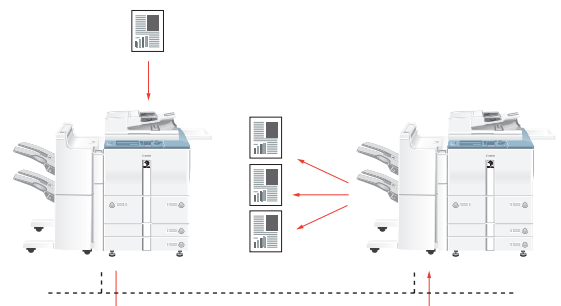


Cascade/Remote Copy

Cascade Copy



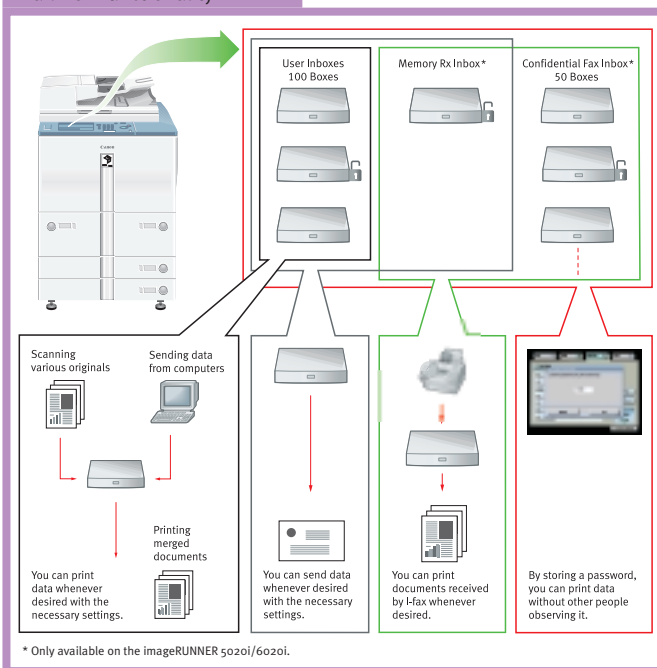
Remote Copy



NO MORE WAITING AROUND WITH EVERYTHING TO DO.

Thanks to its high-capacity memory, the imageRUNNER 5020/6020 Series hosts Mail Box functions that allow for document storage and creation capability. With less lag time, you might find yourself with some long-overdue free time.

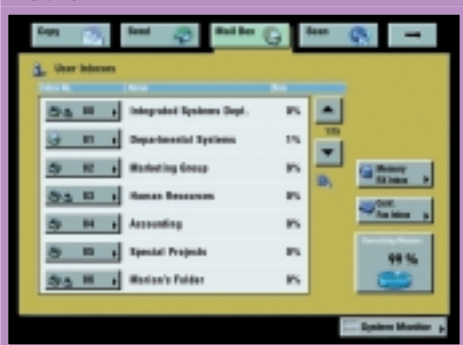
Mail Box Functionality



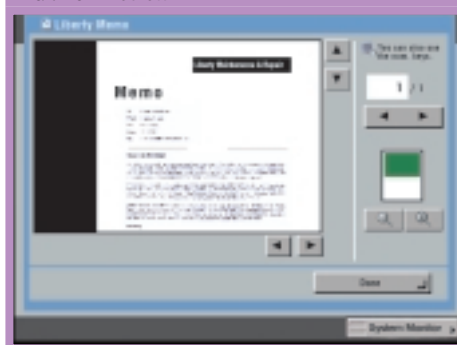
The Mail Box can be used to store your scanned originals—like receipts, frequently used forms, and maps—along with print data such as presentations, proposals, and spreadsheets. Once stored in the Mail Box, the documents can be combined and printed as one job with the desired settings, or sent to other destinations.

For easy identification, up to 100 user-inboxes can be named for individual users, departments, and specific tasks, and then password-protected for security. You can even preview and assemble the contents in a Mail Box at the device or at your desktop using a web browser prior to printing, forwarding, or deleting.

Mail Box



Mail Box Preview



Key Vertical Market Applications

Executive Offices

- Send confidential information to a Mail Box for later printing.

Finance Department

- Combine scanned images with spreadsheets to make professional-looking reports.

Administration

- Scan and store frequently used forms and print the quantity you need at the point and time you really need it.

IMAGINE AN INTERSECTION WHERE YOU ALWAYS HAVE THE RIGHT-OF-WAY.

The imageRUNNER 5020/6020 Series is the do-it-all system that will simplify your workday and streamline your workflow. With one robust system to do the work of many different devices, you'll consolidate equipment purchases, reduce costs, and save space.

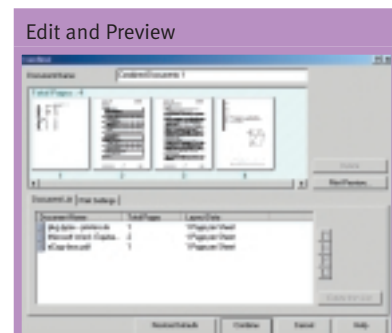
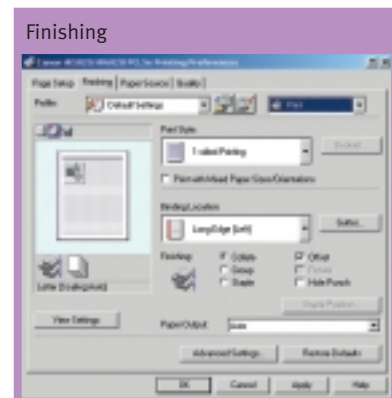
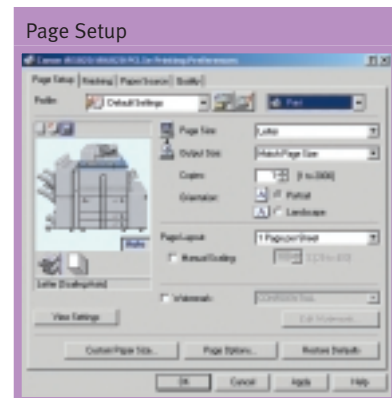
A New Level of Printing Flexibility

When it comes to network printing, nobody does it better than Canon. The imageRUNNER 5020i/6020i ship standard as a fully network-connected model featuring the Canon-designed Network Multi-PDL Printer Kit-D1. The imageRUNNER 5020/6020 devices offer customers the option of choosing from the Canon controller or the imagePASS-M2, co-engineered by Canon in partnership with Electronics for Imaging (EFI).

The Network Multi-PDL Printer Kit-D1 delivers printing capabilities ideally suited to handle the printing requirements of workgroups and departments, with support for PCL 5e/6 and PostScript® 3™ emulation page description languages. For high bandwidth printing requirements, the imagePASS-M2* features its own hardware dedicated to printing applications, with support for genuine Adobe® PostScript 3 and PCL 5e/6 emulation. No matter which print controller option you choose, you'll benefit from maximum image quality and performance.

Intuitively designed print drivers will allow you to start the document creation process right from your desktop with the ability to access easy page layouts, document finishing, and image quality settings. You can even access advanced features like Edit and Preview (Page Composer), Secured Print, Store (to Mail Box), and more!

* Check with your local Canon-authorized Dealer for availability.



IT DISSIPATES PRESSURE FAR BETTER THAN YOU.

Suddenly you'll feel like a huge weight has been lifted from your shoulders. The stress of managing information, multiple tasks, and devices the old way is gone. And you can go back to doing your real job.



User Authentication

Enable Department ID Mode to limit access to the imageRUNNER 5020/6020 Series to those users assigned valid IDs and passwords, set volume ceilings, and restrict or enable access to copy, scan, and print functions for up to 1,000 departments or users. An optional Control Card/Card Reader system manages usage through the use of intelligent cards that must be inserted in the system before granting access to functions. In addition, Simple Device Login (SDL) and Single Sign-on (SSO) allow users to enter personal IDs and passwords to gain system access.

imageRUNNER Security Kit

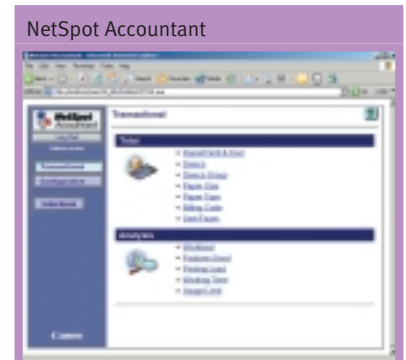
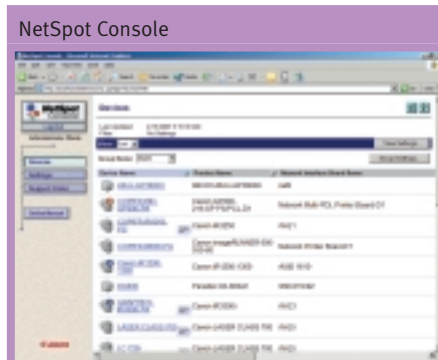
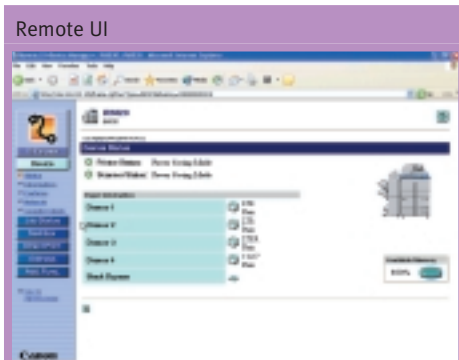
Your corporate information is a vital asset and one that should be protected at all times. For this reason, Canon offers the imageRUNNER Security Kit, a software package that initiates the overwriting of hard disks and completely erases previously stored data, safeguarding critical information and protecting corporate interests.

Remote UI™

This pre-installed utility enables end-users to check system status and configuration, access Mail Boxes, view stored documents, and more—using only a standard web browser. Simply input the TCP/IP address of the target device, and real-time system information is at your fingertips. Remote UI enables administrators to import and export detailed device settings to and from another device. As a result, configuring multiple units over the network has never been easier.

NetSpot® Suite

To truly support customer requirements, networked devices must be easy to install, seamlessly integrate with existing network management applications, and permit management from anywhere in the enterprise. Canon's comprehensive solution to these customer requirements is embodied within the NetSpot Suite. This is a group of software utilities designed to ease the administrative burdens associated with installing, monitoring, and managing Canon and third-party print devices on corporate enterprise networks.



CHALLENGE THE CONVENTIONAL AND EMPOWER YOUR BUSINESS

Utilize a unique customizable platform designed for your specific business applications.

Work The Way You Want

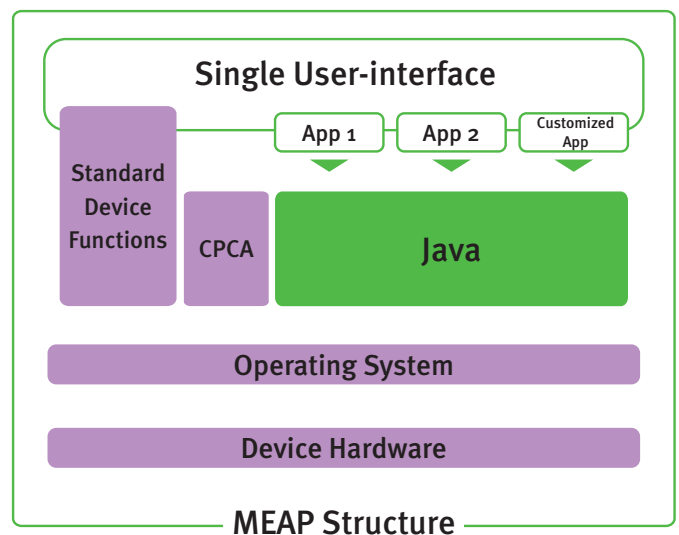
Canon is set to transform the way you work. For the first time ever, your business needs come before anything else. Through consultation, a personalized platform can be developed to fulfill your precise applications, providing unparalleled business and workflow benefits that are both affordable and highly effective.

Java-based Open Platform That Offers Unlimited Uses

MEAP™ (Multifunctional Embedded Application Platform) is based on familiar Java standards and presents highly flexible possibilities. With Canon's MEAP platform technology running inside imageRUNNER 5020/6020 Series devices, additional applications can be easily installed and integrated, making it possible to control any aspect of a document's workflow, and ultimately lead to true and total integration of your business needs.

MEAP lets you work the way you want—with profitable results. It ensures absolute synergy between a device and its applications, delivering cohesive, scalable performance as well as simplified operation. It eliminates the need for costly external hardware, and because it provides solutions that meet your precise needs—with the ability to adapt readily as required—it offers unequalled investment value that provides cost-effective and truly customized solutions, without compromise.

To learn more about Canon's customizable development platform, contact your local Canon-authorized Dealer or visit Canon's website at www.cusa.canon.com.



EXCEED EXPECTATIONS, EVEN THE LOFTY ONES.

While most multifunction devices are content to deliver the basics, the imageRUNNER 5020/6020 Series offers all the tools to help you perform your best. But, then again, would you ever expect anything less from Canon?

Automate Your Business

Let the imageRUNNER 5020/6020 Series automate your document-handling chores so you can perform other tasks. Its standard Duplexing Automatic Document Feeder automatically and reliably feeds up to 100 one- or two-sided originals. Its generous paper supply of 4,150 sheets can be boosted to a maximum of 7,650 sheets for uninterrupted productivity. And, the system can handle paper sizes up to 11" x 17" and weights up to 110 lb. Index, including specialty paper stocks.

There's a choice of two finishers that facilitate the delivery of professional-looking documents that will surely make you shine. The Finisher-F1 supports an output capacity of 2,000 sheets and supports multiposition-stapled output ready for fast distribution. The optional Saddle Finisher-F2 makes saddle-stitched, V-folded booklets a snap for both walk-up and desktop users. There's even an optional hole-punching unit that will deliver both

two- and three-hole-punched output for efficient placement into binders.

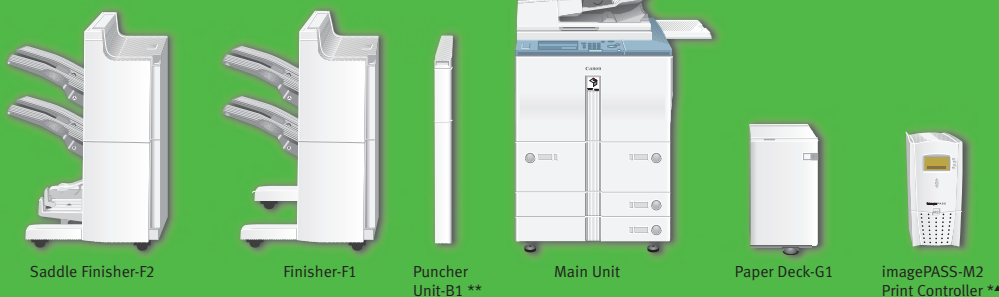
Good to the Environment

As a concerned global corporation, Canon designs and manufactures the imageRUNNER 5020/6020 Series with many environmentally friendly features, all of which contribute to make efficient use of energy, resource conservation, and clean manufacturing technologies.

Image of a Leader

As the leading producer of network-connected multifunction devices in the industry, Canon continues to set new standards for quality, performance, and reliability. That's why you can trust Canon to provide you with solutions to make your department more productive, and any business more competitive.





imageRUNNER® 5020/6020 SERIES

imageRUNNER 5020/6020 Series Specifications

Type:	Digital, Multifunction Imaging System
Imaging System:	Laser Dry Electrostatic Transfer
Developing System:	Dry Monocomponent Toner Projection
Image Server Memory:	Standard 256MB RAM + 10GB HDD (Max. Capacity: Approximately 3,700 Originals)
First-copy Time:	3.8 Seconds from Platen Glass 5.1 Seconds from ADF
Warm-up Time:	5 Minutes or Less (5020/5020I) 6 Minutes or Less (6020/6020I)
Acceptable Originals:	Sheets, Books, 3-dimensional Items (Up to 4.4 lb.)
Max. Original Size:	11" x 17" (Ledger)
Max. Copy Size:	11" x 17" (Ledger)
Min. Copy Size:	4-1/8" x 5-7/8"
Max. Mail Boxes Supported:	100
Max. Copy Reservation:	5 Jobs
Copy/Scanning Resolution:	600 dpi x 600 dpi 600 dpi x 600 dpi
Printing Resolution:	2400 dpi x 600 dpi Interpolated
Halftone:	256 gradations of gray
Copy Speed:	50 cpm/60 cpm (Letter) 39 cpm (Letter-R) 36 cpm (Legal) 30 cpm (Ledger)
Duplexing:	Standard Automatic Trayless Duplexing
Magnification Reduction/ Enlargement:	25% to 400% in 1% Increments
Paper Supply Standard:	Dual Front-loading Trays (1,500 Sheets Each) Dual Front-loading Cassettes (550 Sheets Each) 50-sheet Stack Bypass 3,500-sheet Paper Deck (Total: 7,650 Sheets)
Optional:	1 to 9,999
Multiple Copies:	17 to 24 lb. Bond (550-sheet Cassettes)
Paper Weights:	17 to 110 lb. Index (Manual Bypass, 1,500-sheet Drawers and 3,500-sheet Optional Paper Deck-G1)
Dimensions (H x W x D):	44-3/4" x 25-3/8" x 29-1/4" (1,136mm x 643mm x 743mm)
Weight:	462 lb. (210kg)
Drum:	Amorphous Silicon – Estimated Yield: 3,000,000 Impressions
Maximum Duty Cycle:	5020: 200,000 Impressions/Month 6020: 230,000 Impressions/Month
Toner:	Magnetic Negative Toner – Estimated Yield: 33,000 Images (at 6% Coverage)
Sending Functions (5020I/6020I)	
Sending Methods:	E-mail, I-fax, Database (Salutation), File Server (IPX, FTP, SMB)

Address Book Capacity:	Maximum 1,800
File Format:	Single-page TIFF, Single-page PDF, Multipage TIFF, PDF
Sending Sizes:	Statement to Ledger
Scanline Density:	200 x 200 dpi, 300 x 300 dpi 200 x 400 dpi, 600 x 600 dpi

Accessories

Automatic Document Feeder (Standard)

Acceptable Originals:	Statement to Ledger
Capacity:	100 Sheets (Letter/20 lb.)
Max. Paper Weight:	Up to 32 lb. Bond (Letter)

Finisher-F1 (Optional)

Number of Trays:	2 Trays
Tray Capacity	
Top Tray:	1,000 Sheets (Letter) 500 Sheets (Ledger) Offset Stacking: Max. 30 Sets (All Sizes)
Lower Tray:	1,000 Sheets (Letter) 500 Sheets (Ledger) Max. 30 Sets (All Sizes)
Offset Stacking:	Max. 30 Sets (All Sizes)
Staple Position:	1-Top Corner 2-Side Margin
Max. Stapling Capacity:	50 Sheets (Letter/Statement) 30 Sheets (Letter-R/Legal/Ledger)

Saddle Finisher-F2 (Optional)

Number of Trays:	2 Trays
Tray Capacity	
Top Tray:	1,000 Sheets (Letter) 500 Sheets (Ledger) Offset Stacking: Max. 30 Sets (w/Staple) (All sizes)
Lower Tray:	1,000 Sheets (Letter) 500 Sheets (Ledger) Offset Stacking: Max. 30 Sets (w/Staple) (All Sizes)
Saddle-stitch Tray:	300 Sheets
Staple Position:	1-Top Corner 2-Side Margin
Max. Stapling Capacity:	50 Sheets (Letter/Statement) 30 Sheets (Letter-R/Legal/Ledger)
Saddle-stitch Tray	
Stapling Capacity:	15 Sheets
Folding:	V-folding Standard

Puncher Unit-B1** (Optional)

Max. Paper Weight:	Up to 110 lb. Index
Punch Types:	2-hole/3-hole (Auto Change) 3-hole (Letter/Ledger) 2-hole (Legal/Letter-R)
Punch Dust Stock:	Approximately 3,000 Sheets

Paper Deck-G1	
Paper Capacity:	3,500 Sheets (20 lb. Bond)
Paper Size:	Letter
Paper Weight:	17 lb. Bond to 110 lb. Index

Network Multi-PDL Printer Kit-D1 (Standard with 5020I/6020I)

Processor:	Canon Custom Processor—Shared
RAM:	256MB (Std./Max.)—Shared
Hard Disk:	10GB
PDL Support:	PCL 5e, PCL 6, PostScript 3 Emulation
Interface Connections:	RJ-45 (10/100Base-T) IEEE 1284 (Compatibility: Nibble, Byte and ECP Mode) Token Ring (Optional Card)

imagePASS-M2**

Type:	Intel® Pentium® III External Stand- alone Controller
Processor:	1GHz Processor
RAM:	128MB Standard
Hard Disk:	20GB
PDL Support:	Adobe PostScript 3, PCL 5e, PCL 6
Interface	
Standard:	10/100Base-T (RJ-45), Parallel Port (Type B Connector)
Optional:	Token Ring
Additional Functions Supported:	Network ScanGear, Remote UI, Universal Send, NetSpot (except Job monitor)
Standard:	Command WorkStation™, Fiery® Downloader™, Fiery Link™, WebTools™

Other Optional Accessories and Utilities

Copy Tray-C3
Control Card IV
Control Card Printer-A1
Card Sets
Accessibility Handle-A1
Resolution Switching Board-B1
Token Ring Network Interface Adapter
Expansion Bus-A2
I-O 5435dp
imageRUNNER Security Kit-A1P
imageWARE Suite
NetSpot Suite
eCopy Suite

* Check with your local Canon-authorized Dealer for availability.

** Puncher Unit-B1 can only be installed with the Finisher-F1 and Saddle Finisher-F2.

▲ Option for the imageRUNNER 5020/6020 models only; not available for the I models.

As an ENERGY STAR® Partner, Canon U.S.A., Inc. has determined that these products meet the ENERGY STAR® guidelines for energy efficiency. ENERGY STAR and the ENERGY STAR certification mark are registered U.S. marks. Adobe and PostScript are registered trademarks of Adobe Systems Incorporated in the United States and/or other countries. Fiery is a registered trademark of Electronics for Imaging, Inc. in the U.S. Patent and Trademark office and certain other foreign jurisdictions. Command WorkStation, Fiery Downloader, Fiery Link, and WebTools are trademarks of Electronics for Imaging, Inc. Intel and Pentium are registered trademarks of Intel Corporation. Canon and NetSpot are registered trademarks, and MEAP, Universal Send, Canon Know How, and the GENUINE logo are trademarks of Canon Inc. IMAGERUNNER is a registered trademark of Canon Inc. in the U.S. and Canada. IMAGEWARE and Remote UI are trademarks, and IMAGEANYWARE is a service mark of Canon U.S.A., Inc. All other terms and product names may be trademarks or registered trademarks of their respective owners, and are hereby acknowledged.

Specifications subject to change without notice.

0037W711

0603-IR5020/6020-100M



Canon KNOW HOW™

1-800-OK-CANON
www.usa.canon.com

Canon U.S.A., Inc.
One Canon Plaza
Lake Success, NY 11042